



Icology Group

Empowering Individuals to End Poverty

I Home™ 401

16' x 24' Permanent Housing

The high quality, affordable and ecologically sound housing solution. Ideal for people looking to maximize their own living space and for affordable housing providers.

- ✓ Scandinavian inspired flat pack self assembly kit keeps purchase, transportation and construction costs to a minimum
- ✓ Each kit includes: foundation plates; I WOOD™ framing, ridge and rafters; plywood siding and roofing; drip edge; one door and four windows; three section partition wall; electrical and lighting starter kit
- ✓ Straightforward assembly requires no previous construction experience
- ✓ Customizable floor plans mean you can 'make it your own' with no additional costs
- ✓ Smaller environmental impact and lower cost than similar size alternatives



Specifications:

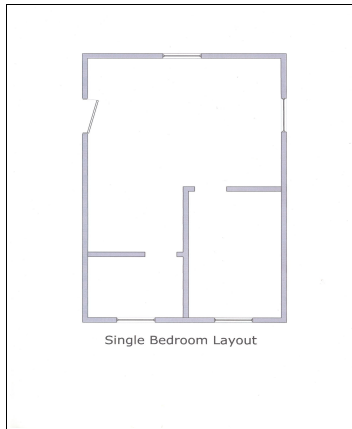
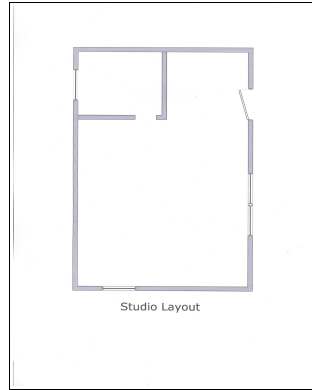
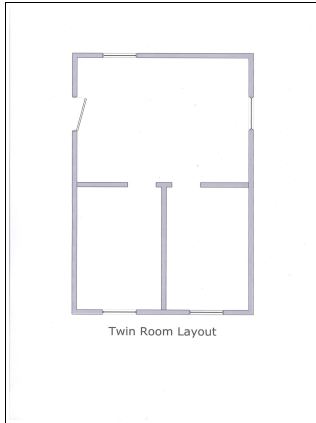
- 16 ft x 24 ft single story footprint
- 5 year limited warranty on manufactured parts
- Pressure treated 4"x4" foundation plates come with corner anchor bolts
- I WOOD studs and corner posts pre-drilled for electrical and plumbing
- 1/2" plywood siding suitable to paint or Stucco
- Milgard 3036 vinyl frame single pane slider windows with insect screen
- Codel 3068 prehung insulated steel door with lock set
- Two 8' and one 12' width partition wall
- Rafters & ridge construction with clear span cathedral-style ceiling
- 1/2" plywood roof sheathing
- 15 lb roofing felt paper
- Asphalt laminated shingle with 30 year limited warranties
- All screws and hardware provided
- Kit packaged for off-loading by hand
- Estimated total weight = 4200 lbs

Tel: +1.760.402.1696 e-mail: sales@icologygroup.com

Icology Group, Inc. • La Jolla, CA, USA

Popular layouts for the I Home 401

Thanks to our modular component building system all window & door openings and partitions can be located to suit your specific needs without ordering custom components



I Homes are expandable in 200 sq ft increments for additional living space

Expansion options :

- Extra rooms
- Porch
- Carport / Garage
- Sunroom

Accessories:

- Additional doors and windows
- Plumbing starter kit
- Composting toilet
- Solar panel
- Air conditioning unit
- Furniture starter pack
- Fencing solutions
- Greenhouse
- Storage space

Call for price and availability. Ask about what you don't see too and we'll see what is possible.

Important Notes:

- Flat hard surface such as rammed earth or concrete pad required prior to build (concrete pad materials not included in I Home 401 kit)
- Planning permission, where necessary is the responsibility of the purchaser
- Warranty and terms & conditions of sale for all Icology Group product is available at www.icologygroup.com/warrantyandterms

Call for your quote today

Tel: +1.760.402.1696

e-mail: sales@icologygroup.com

Icology Group, Inc. is a social enterprise. All profits are used to provide affordable housing and emergency shelter to those most in need.

Visit us now at www.icologygroup.com



Icology Group

Empowering Individuals to End Poverty